

R. 31 W.

R. 30 W.

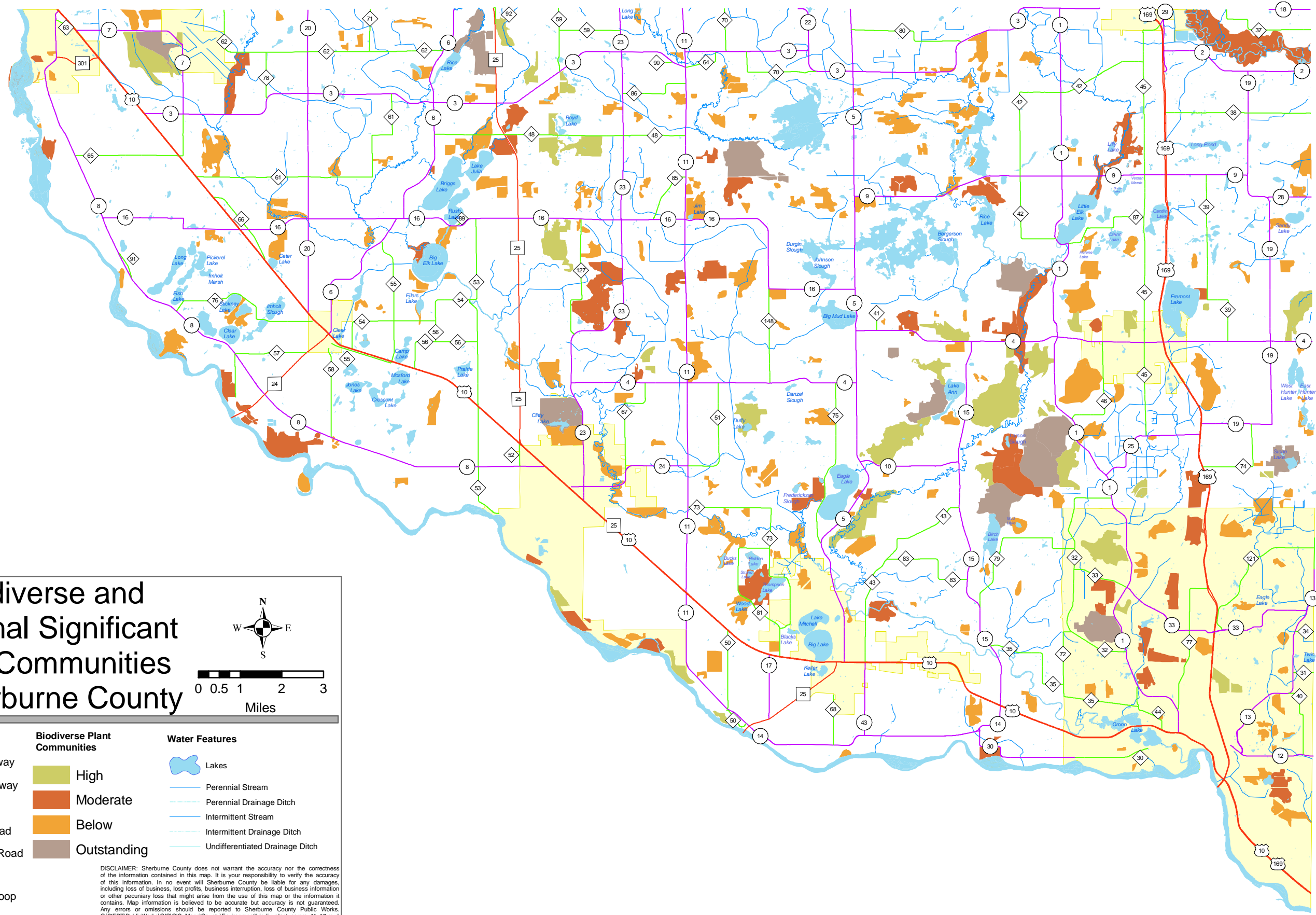
R. 29 W.

R. 28 W.

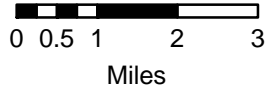
R. 27 W.

R. 26 W.

Figure 4



# Biodiverse and Regional Significant Plant Communities in Sherburne County



- Transportation**
- U.S. Highway
  - State Highway
  - CSAH
  - County Road
  - Township Road
  - City Street
  - Ramp or Loop
  - Airport

- Biodiverse Plant Communities**
- High
  - Moderate
  - Below
  - Outstanding

- Water Features**
- Lakes
  - Perennial Stream
  - Perennial Drainage Ditch
  - Intermittent Stream
  - Intermittent Drainage Ditch
  - Undifferentiated Drainage Ditch

DISCLAIMER: Sherburne County does not warrant the accuracy nor the correctness of the information contained in this map. It is your responsibility to verify the accuracy of this information. In no event will Sherburne County be liable for any damages, including loss of business, lost profits, business interruption, loss of business information or other pecuniary loss that might arise from the use of this map or the information it contains. Map information is believed to be accurate but accuracy is not guaranteed. Any errors or omissions should be reported to Sherburne County Public Works. G:\DEPT\PublicWorks\GIS\GIS\_Maps\County\Environment\biodiv\_plant\_comm\_11x17.mxd Map was Updated/Created: February 22, 2005

T. 35 N.

T. 34 N.

T. 33 N.

T. 32 N.